

## Glass DC Nebulizers

### SeaSpray

1mL/min uptake	A22-1-USS1
400µL/min uptake	A22-1-USS04

### MicroMist

400µL/min uptake	A22-1-UM04
200µL/min uptake	A22-1-UM02
100µL/min uptake	A22-1-UM01



## DC Nebulizers for HF

### OpalMist

400µL/min uptake	A22-1-PFA04
200µL/min uptake	A22-1-PFA02
100µL/min uptake	A22-1-PFA01
50µL/min uptake	A22-1-PFA005



## DC Nebulizers for HE-SIS

### MicroMist HE

200µL/min uptake	C22-1-UFT02
------------------	-------------



## Spray Chambers

### Twister

50mL Cyclonic (2.4mm Aux. Port) 90deg Screw Mount	20-809-3854HE
---	---------------



### Twister

50mL Cyclonic with Screw Mount	20-809-3892HE
-----------------------------------	---------------



### Twinnabar

20mL Cyclonic	20-809-3650HE
---------------	---------------



## Spray Chambers for HF

### Cinnabar

20mL Cyclonic	20-809-3709HE
---------------	---------------



### Tracey PFA44

44mL Cyclonic	20-809-3713
---------------	-------------



### High Efficiency Sample Introduction System

HE-SIS for PerkinElmer NexION 300/350	KT-1204
--	---------



## Torches

### D-Torch

30-807-0540
-------------

#### Comprises:

Base and Inner Tube	31-808-2847
Quartz Outer Tube	31-808-2848
Retaining Ring	31-808-2818



### D-Torch for HF

30-808-2937
-------------

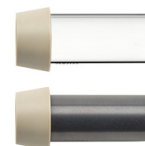
#### Comprises:

Base and Inner Tube	31-808-2847
Ceramic Outer Tube	31-808-2849
Retaining Ring	31-808-2818



#### D-Torch Options:

Quartz Outer Tube	31-808-2848
Ceramic Outer Tube	31-808-2849



## Torches

(continued)

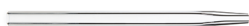
## Quartz Torch

Standard Quartz Torch	30-808-8107
High Efficiency Quartz Torch	31-808-2784



## Quartz Injectors (non DRC)

Tapered Quartz Injector 1.5mm	31-807-0006
Tapered Quartz Injector 1.8mm	31-807-0005
Tapered Quartz Injector 2.0mm	31-807-0004



These injectors are compatible with both D-Torch and standard torch. They are suitable for torch adaptor 31-808-2825.

## Quartz Injectors (DRC Versions)

Tapered Quartz Injector with Ball Joint, 0.85mm	31-808-3125
Tapered Quartz Injector with Ball Joint, 1.5mm	31-808-0851
Tapered Quartz Injector with Ball Joint, 2.0mm	31-808-0806
Tapered Quartz Injector with Ball Joint, 2.5mm	31-808-3463



These injectors are compatible with both D-Torch and standard torch. They are suitable for torch adaptor 31-808-2824.

## HF Resistant Injectors

Tapered Alumina Injector 2.0mm	31-807-0060
Sapphire Injector 2.0mm	31-808-2803



These injectors are compatible with both D-Torch and standard torch. They are suitable for torch adaptor 31-808-2825.

## Torch Adaptor

Cassette Mount Adaptor for Ball Joint Injector	31-808-2824
---	-------------

This adaptor is suitable for injectors with a ball joint.



## Torch Adaptor

PFA Cassette Mount Adaptor	31-808-2825
----------------------------	-------------

This adaptor is suitable for injectors without a ball joint.



## Cones

## Sampler Cones

Nickel Sampler	PE3011-Ni
Aluminium Sampler	PE3011-Al
Platinum Sampler	PE3013-Pt
Platinum Sampler (18mm)	PE3013A-Pt
Platinum Sampler Boron free	PE3013-Pt-BF



## Skimmer Cones

Nickel Skimmer	PE3012-Ni
Aluminium Skimmer	PE3012-Al
Platinum Skimmer	PE3014-Pt
Platinum Skimmer Boron free	PE3014-Pt-BF
Aluminium Hyper Skimmer	PE3015-Al
Nickel Hyper Skimmer	PE3015-Ni
Platinum Hyper Skimmer	PE3015-Pt/Ni



O-ring for NexION Hyper Skimmer Cone (pack of 5)	PE5115
---	--------

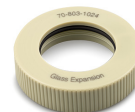


Screw for NexION Hyper Skimmer Cone (pack of 2)	PE5116
--	--------



## ConeGuard Thread Protectors

Sampler Cone Guard For NexION 300/350	70-803-1024
Skimmer Cone Guard For NexION 300/350	70-803-1026



Gasket for Sampler Cone (pack of 5)	PE5111
--	--------



## RF Coils

Copper 70-900-2006C



RF Coil Installation Kit 70-900-2006T



## Common Accessories

### Elegra Argon Humidifier

Elegra Dual Argon Humidifier 70-803-1274



### Guardian In-Line Filters

Guardian DC in-line non-return gas filter 70-803-1942

Guardian in-line sample filter 70-803-1108

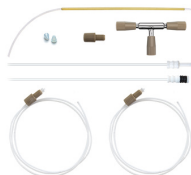
Eluo Adaptor for Inline Filter 70-803-1160



### Trident Internal Standard Kits

Trident CT Standard Kit 60-703-1179

Standard Kit for HF solutions 60-808-1150



Magnifier Inspection Tool 70-803-1923



## Autosampler Probes (See page 20-21 for complete list of probes)

### Suitable for Cetac ASX-200/500/800 Series and PerkinElmer S20 Series

Guardian Probe 0.75mm  
Probe Connecting Line (Red) 70-803-1803

\*(suitable for Cetac only)



Guardian Probe with Holder, 0.75mm  
Probe Connecting Line (Red) 70-803-2097

\*(suitable for PerkinElmer S20 Series only)



Polyimide sheathed Autosampler  
Probe 0.5mm ID 60-808-1186L

PTFE Encapsulated Carbon Fibre  
Probe 0.5mm ID 70-803-0784

PTFE Encapsulated Carbon Fibre  
Probe 0.75mm ID 70-803-1443

PTFE Encapsulated Carbon Fibre  
Probe 1.0mm ID 70-803-0793



### Suitable for PE S10 or AS93+

PTFE Encapsulated Carbon  
Fibre Probe 0.25mm ID 70-803-1071

PTFE Encapsulated Carbon  
Fibre Probe 0.5mm ID 70-803-1440

PTFE Encapsulated Carbon  
Fibre Probe 1.0mm ID 70-803-0816

